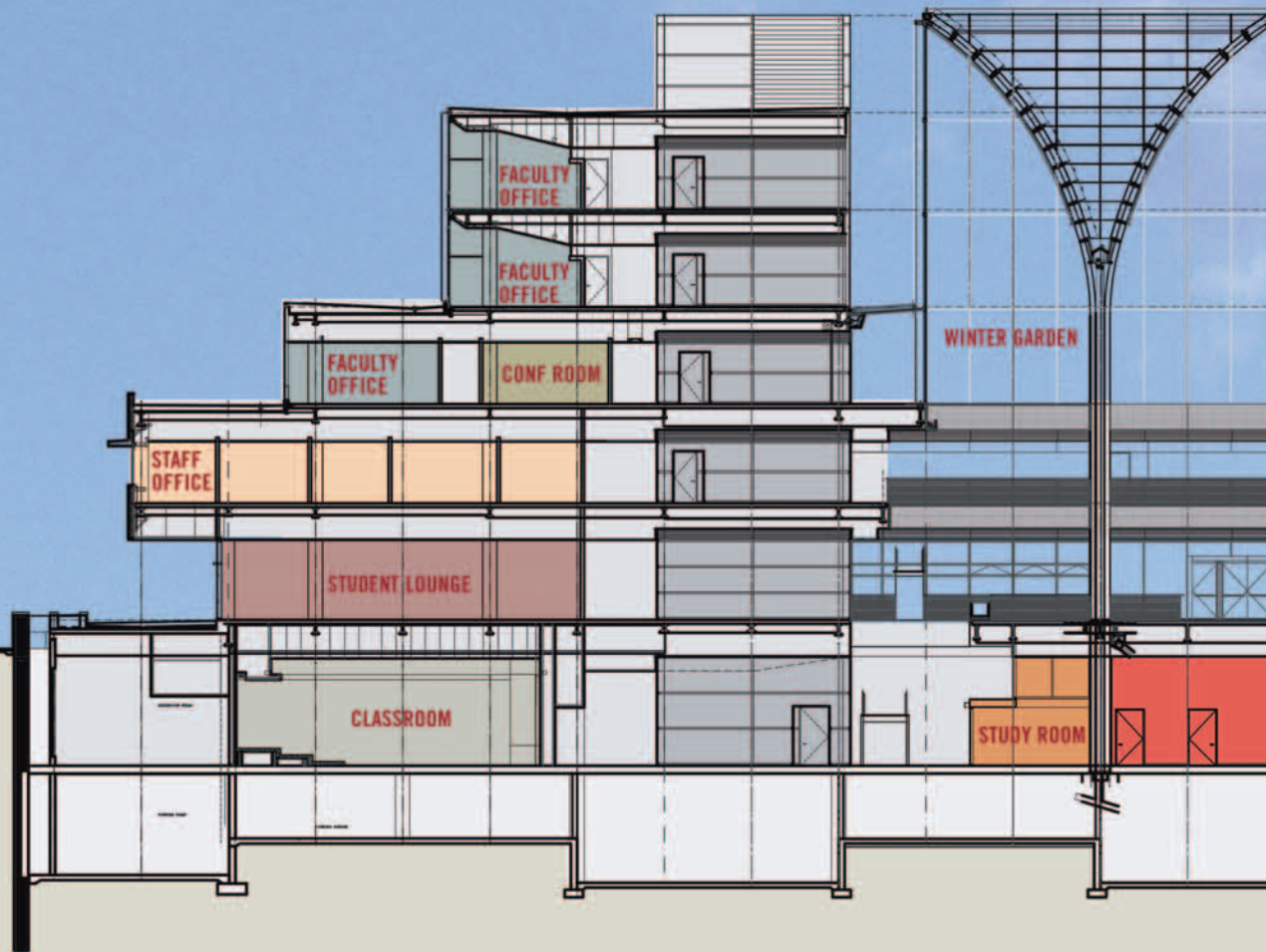


# Succeeding



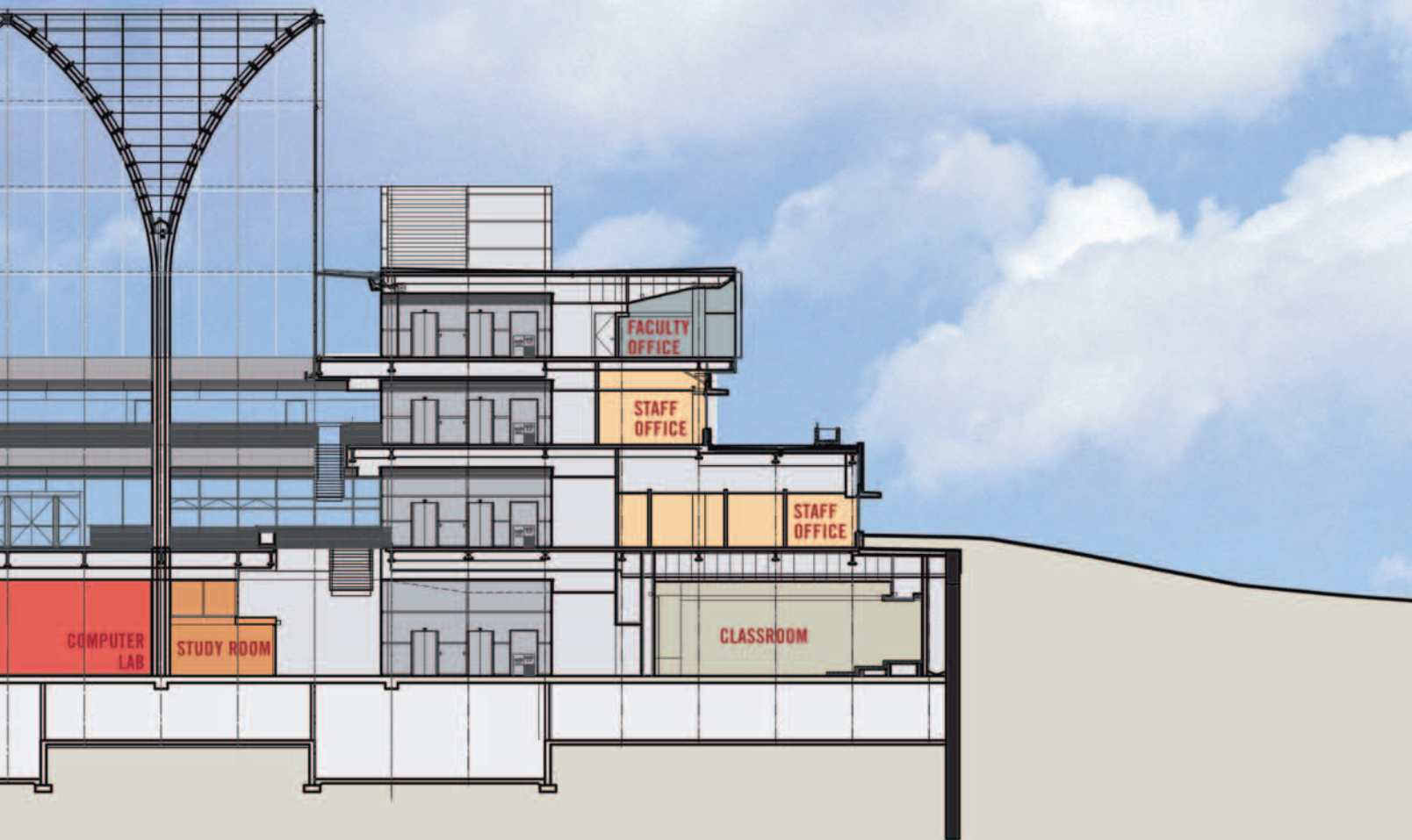
In 1999, Rafael Viñoly was chosen from a group of international architects to design a world-class facility in Hyde Park. On schedule and on budget, the Chicago GSB Hyde Park Center was ready when classes began September 23. The doors will open officially November 6, when alumni and friends of the GSB are invited to see the facility that will take students, faculty, and staff into the 21st century.

# by Design

By Patricia Houlihan

Photos by Dan Dry

Illustrations by  
Rafael Viñoly Architects PC



The center's main entrance is located at 58th Street and Woodlawn Avenue, south of Frank Lloyd Wright's Frederick C. Robie House and east of Rockefeller Memorial Chapel. The terrace just to the left of the entrance features views of Robie House, and a separate staircase was installed on the 58th Street side for tour groups who want a better perspective of Wright's work. Architecture fans also may notice the cantilevered floors and horizontal

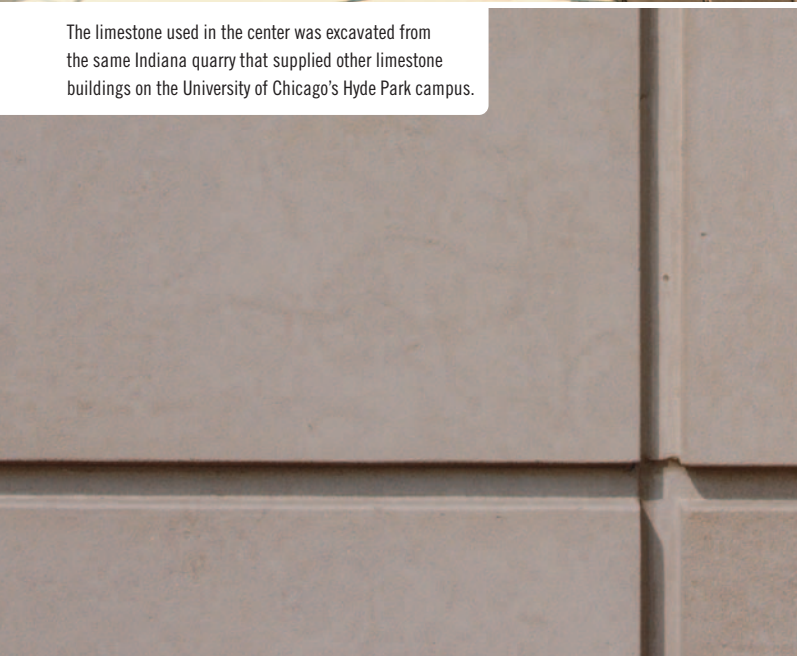
limestone detailing on the façade of the Hyde Park Center—Viñoly's nod to the famous Prairie-style design across the street.

That's the kind of detail that made Viñoly's design emerge from 35 competing firms after a yearlong search. Another is the winter garden, a six-story glass atrium that rises through the center of the building. It's topped by curved steel beams that form Gothic arches, a signature of

## FEATURE CHICAGO GSB HYDE PARK CENTER



The limestone used in the center was excavated from the same Indiana quarry that supplied other limestone buildings on the University of Chicago's Hyde Park campus.



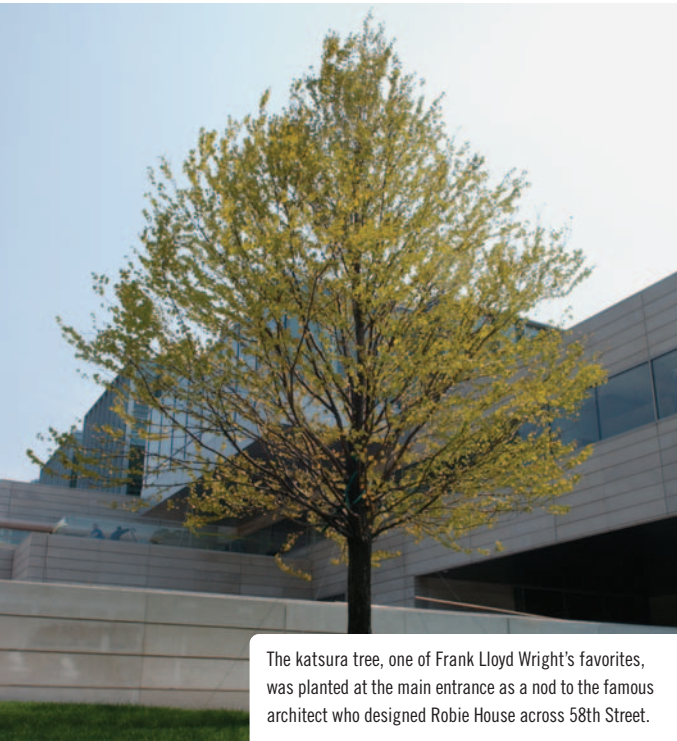
the University of Chicago's architecture and a key design element of Rockefeller Chapel.

Inside, the winter garden functions as a place where people can gather informally during the day and the GSB can host events at night. Experts spent hours making sure the acoustical level was appropriately designed—"somewhere between a shopping mall and a cathedral," said project consultant **Leann Paul, '87**.



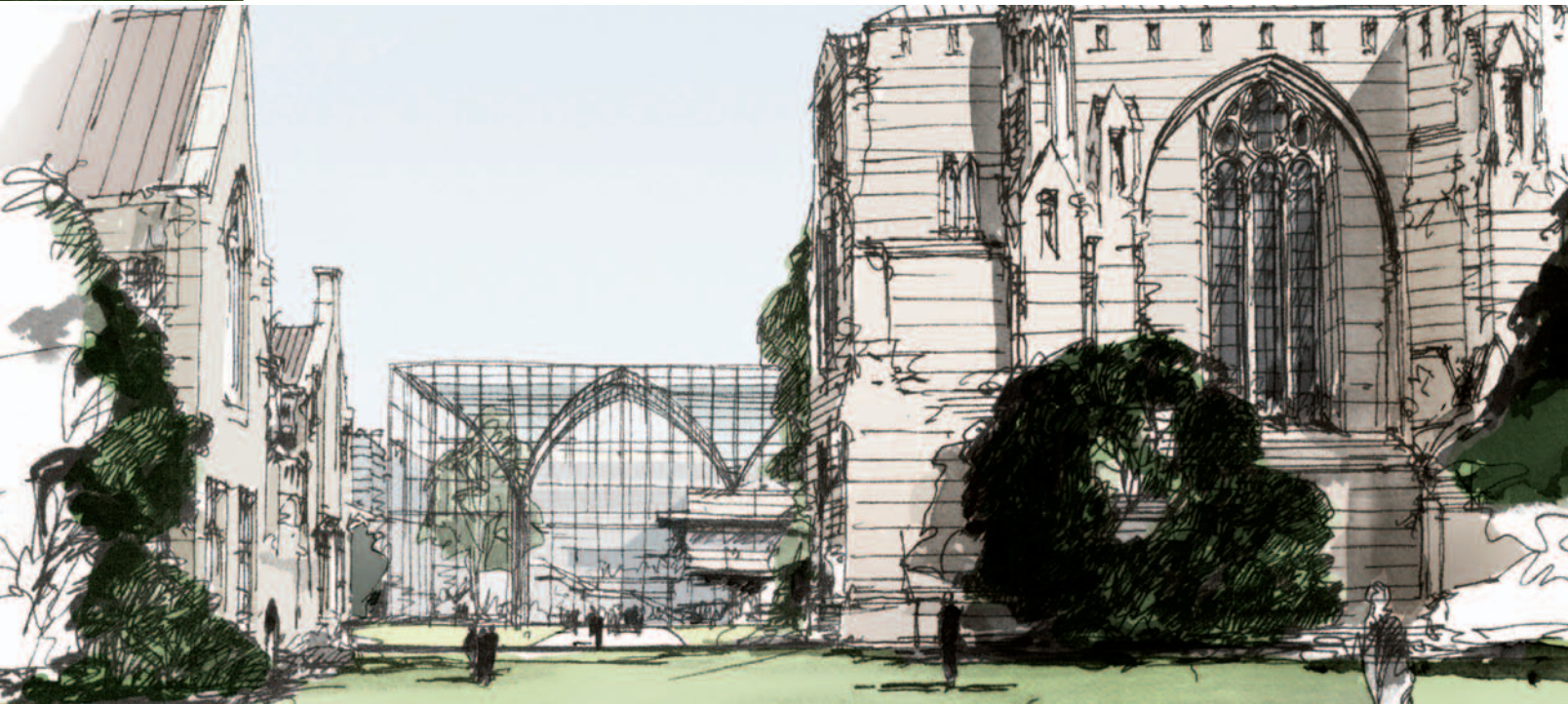
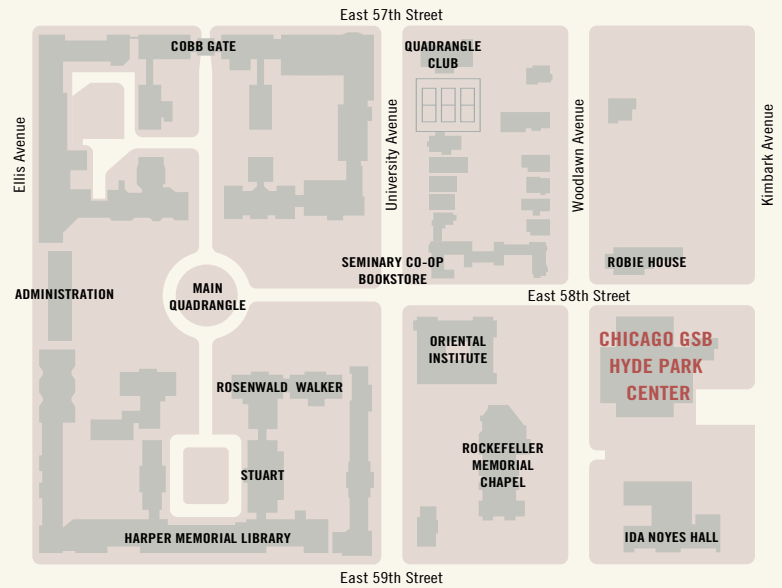
The winter garden columns are hollow and contain heating elements to melt snow and dual drains to prevent water buildup. Window washers will rappel down into the structure and step on small rods to climb out.

Students now will be able to spend their entire day in the center. A student lounge and student study area on the first floor provide large, comfortable areas to eat, relax, or work between classes. The classroom level contains 12 classrooms, 31 group study rooms, locker rooms, and offices for student groups. Hallways are wide, and the hall ceilings are open except for bridges to the winter garden at the first floor level. Natural light filters down to the classroom level,



The katsura tree, one of Frank Lloyd Wright's favorites, was planted at the main entrance as a nod to the famous architect who designed Robie House across 58th Street.

The Hyde Park Center is located north of the Midway Plaisance, close to such university departments as economics and sociology.



giving the space an open feel.

The dean's suite anchors administrative offices on the second floor, overlooking the main entrance. The second floor also features staff offices as well as 36 career services interview rooms that students can use for group study when recruiters are not visiting the GSB. Students also can use the Career Resource Center on the second floor.

Faculty selected offices on the third, fourth, and fifth

floors, with disciplines intermingling.

Throughout the planning and construction, it was clear the building would have a significant impact on the life of the school. "We wanted to draw together students, faculty, and staff to collaborate on making the GSB the best business school in the world," said dean **Edward A. Snyder**. "With the center, we're poised to begin the next chapter." ■