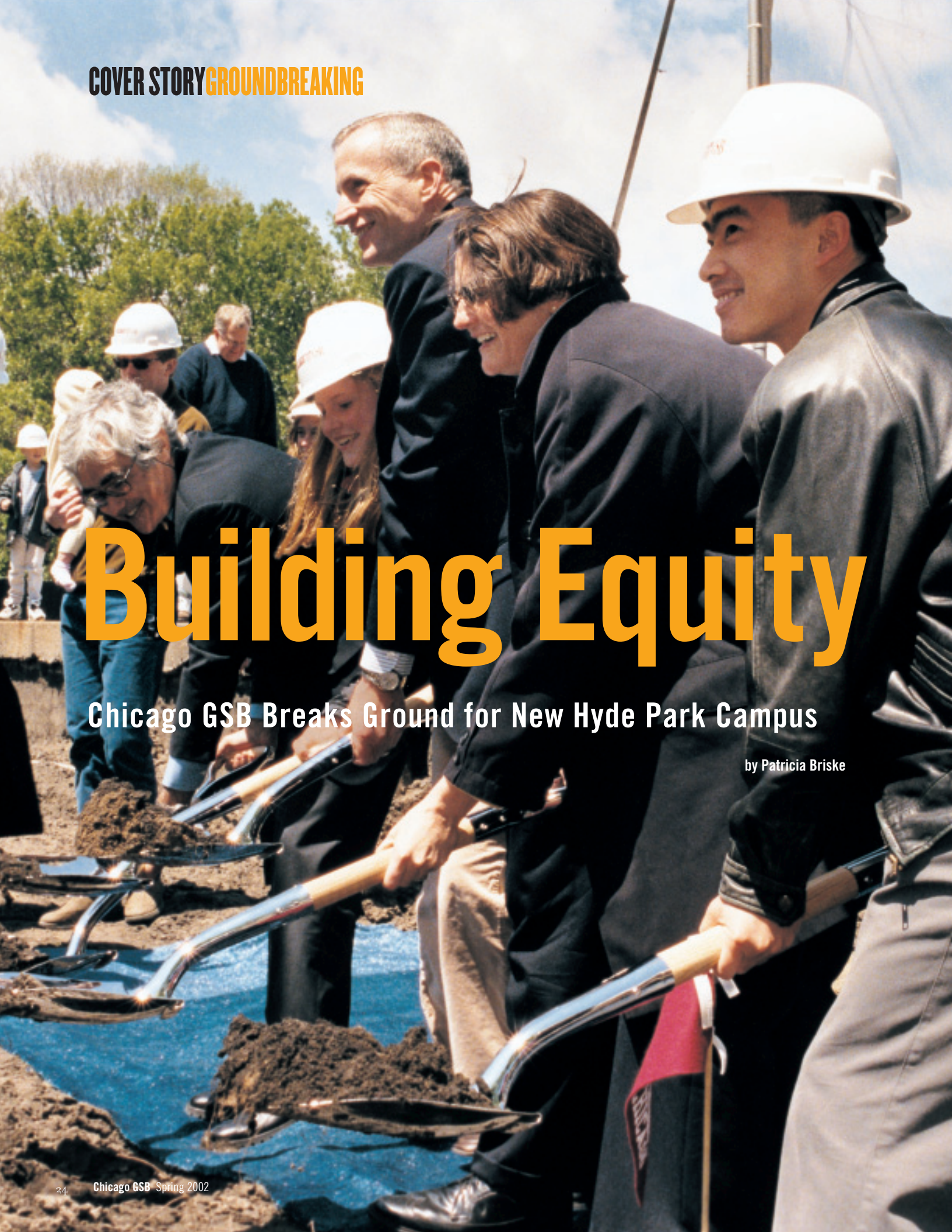


# Building Equity

Chicago GSB Breaks Ground for New Hyde Park Campus

by Patricia Briske



More than 500 people turned out May 18 to see the first spade of dirt turned at 5807 South Woodlawn Avenue.



Digging in at the groundbreaking for the new campus were (from left) architect Rafael Viñoly, Alison Snyder, dean Edward A. Snyder, deputy dean Ann McGill, and Lei Yin, '02. A six-story atrium (illustrated above) is the focal point of the design.

That's the site where a 415,000-square-foot structure will house the GSB's Hyde Park facilities under one roof for the first time in more than fifty years. The new building is scheduled to open in fall 2004.

"Five years ago, we began talking seriously about building an integrated facility for the GSB. Now that wonderful place will rise on this site to help the school achieve its primary purpose—to provide students with the best value-added education in the world, and to provide businesses and governments with groundbreaking new ideas and discoveries," said Dennis J. Keller, '68, capital campaign co-chair.

Among those who joined him to break ground were dean Edward A. Snyder; university president Don Michael Randel; chairman of the university's board of trustees Edgar D. Jannotta; campaign co-chair Andrew M. Alper, A.B. '80, M.B.A. '81; former dean Robert S. Hamada, who initiated the project; and architect Rafael Viñoly.

The centerpiece of the GSB's \$250 million capital campaign, the

\$125 million structure will provide 60 percent more space than existing facilities, the dean said.

“We’ve simply outgrown our space on the original university quadrangle,” Snyder noted after the event. “With the new campus, our full-time students and faculty will experience a dramatic improvement. Facilities do matter, and the new campus will give us a spectacular environment to teach, learn, debate, and work together more effectively.”

**Bring On the Bulldozers**

When heavy equipment rolled onto the site in May, the crew from nationally known Turner Construction was on schedule, said deputy dean

John Huizinga, who is supervising the project. The GSB also hired Mesirow Stein Development Services to oversee construction and serve as a link between the contractor and the school.

“The chief challenge on any construction project is to stay on time and on budget,” Huizinga said. “We

have managed to do that because of the superb team we have working on this project. Mesirow Stein and Turner Construction have both been first rate. Their experience and hard work are the basis of our success.”

The building will include 12 classrooms, 34 group study rooms, and

**“The new campus will give us a spectacular environment to teach, learn, debate, and work together more effectively.”**

**—Edward A. Snyder**



The GSB’s new home will incorporate architectural elements from two famous structures on campus. Frank Lloyd Wright’s Robie House is across 58th Street to the north, and Rockefeller Chapel is located to the west on the other side of Woodlawn Avenue.



A post-groundbreaking lunch on the Midway gave hundreds of alumni, faculty, students, and staff the opportunity to celebrate the morning’s event.

**Alumni Donate for New Building**

Donors to the new Hyde Park campus from January 1, 2000, through May 16, 2002:

- Andrew M. Alper, A.B. '80, M.B.A. '81, and Sharon Sadow Alper, A.B. '80, J.D. '84
- Warren L. Batts
- David G. Booth, '71
- Charles A. Bowsher, '56
- Dwight M. Brookens, XP-10 ('54 )
- Clinton W. Bybee, '90, ARCH Venture Partners
- Thomas J. Charters, '72, and Ann Charters
- Gregory Collins, '81
- Arlys M. Conrad
- Keith L. Crandell, '88, ARCH Venture Partners
- Sidney and Freda Joy Davidson
- David J. Doerge, '76, and Jacqueline R. Doerge
- Fidelity Investments

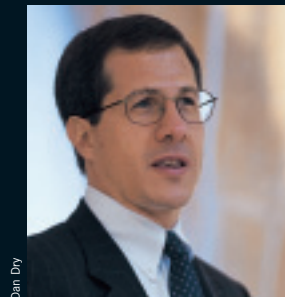
- Frank D. Gerber, '96
- Jerome S. Gore
- Judson C. Green, '76
- Howard G. Haas
- Richard Janiak, '70
- Dennis J. Keller, '68
- Steven Lazarus, ARCH Venture Partners
- Peter W. May, A.B. '64, M.B.A. '65
- Robert T. Nelsen, '87, ARCH Venture Partners
- Robert Rothman, '77
- Joseph C. Shugart, '81
- H. Alex Vance Jr., '71
- Kenneth A. Viellieu, '84, and Amy Kennelly Viellieu
- David J. Vitale, '76
- Lincoln C. K. Yung, '70
- Anonymous (2)



Robert Rothman (left)



David Booth



Andrew Alper

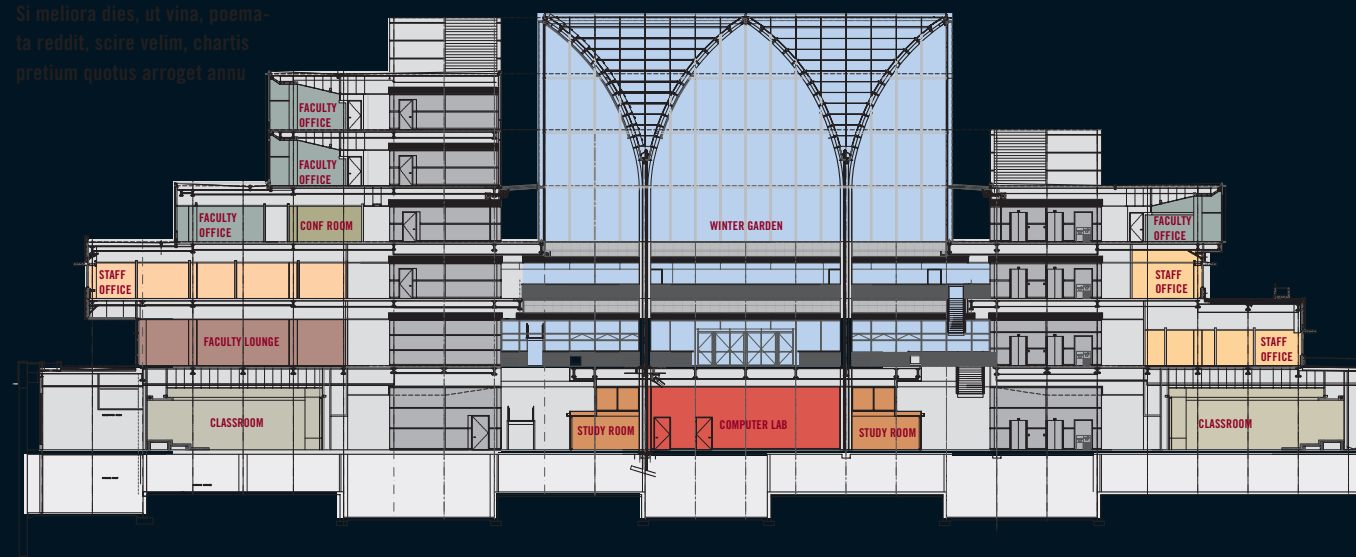


Dennis Keller



Sidney Davidson (left)

Si meliora dies, ut vina, poema-  
ta reddat, scire velim, chartis  
pretium quotus arroyet anno



### By the Numbers: The New GSB Campus

- 415,000 square feet
- 136-seat lecture hall
- 12 classrooms
- 60 percent more space
- 167 faculty offices
- 103,500 square feet of dedicated student space
- 7 floors
- 906 classroom seats
- 250 seats for meeting and eating
- 34 group study rooms
- 42 interview rooms
- 4 management laboratories
- 150 indoor parking spaces
- 3,500-square-foot student lounge
- 2 donor recognition walls
- 6-story winter garden with 37,500 square feet of glass
- 3 outdoor terraces

42 interview rooms, as well as 167 faculty offices, a student lounge, a dining area, and three outdoor terraces. The most distinctive feature is the winter garden, a six-story glass atrium that will rise through the center of the building. Topped by curved steel beams that form Gothic arches, it will bring a sense of light and openness to the structure. The ground floor of the atrium will provide a place where people can gather informally during the day and the GSB can host events at night.

The main entrance will be located on the northwest corner. Over it will be the dean's suite, which will anchor the second floor. Administrative offices will be located on the first two floors, while faculty offices will fill much of the third, fourth, and fifth floors. Viñoly designed the building to step back as it rises.

An entire floor is devoted to classrooms and other student space. While it will be below ground, rooms are spacious and open. Most importantly to students, the facilities will incorporate the most advanced technology, such as plasma computer screens. A student building committee lobbied successfully for 34 group study rooms as well as a large, quiet reading room where students can study independently. "Together, they'll be a vast improvement on the Stuart third-floor library," said Brett Coleman, '02, who headed the committee.

Students also were pleased with the features of the 3,500-square-foot

student lounge where they will be able to relax and socialize. The informal space will feature plenty of couches and enough televisions that students can follow the financial markets, news, and sports. A digital jukebox will liven up

Brats 'n' Brew and create the kind of place where students just want to "hang out," Coleman said.

In fact, Huizinga said, collaboration was the key to making sure the building works well for students, faculty, and

**"You're doing a good thing for the business school, and a great thing for the university."—Edgar D. Jannotta**

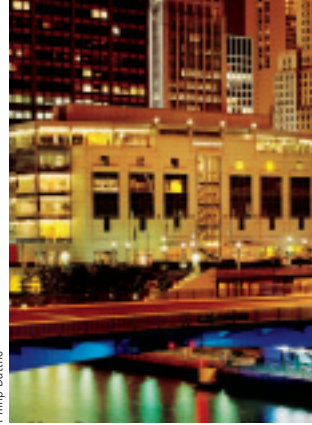


Kevin Weinstein



Dan Dy

Many attendees donned hard hats for the groundbreaking at 58th Street and Woodlawn Avenue. Construction crews have been on schedule since the project began.



Philip Dattilo

**Gleacher Center 1994**



Xavier Sarda

**Barcelona 1994**



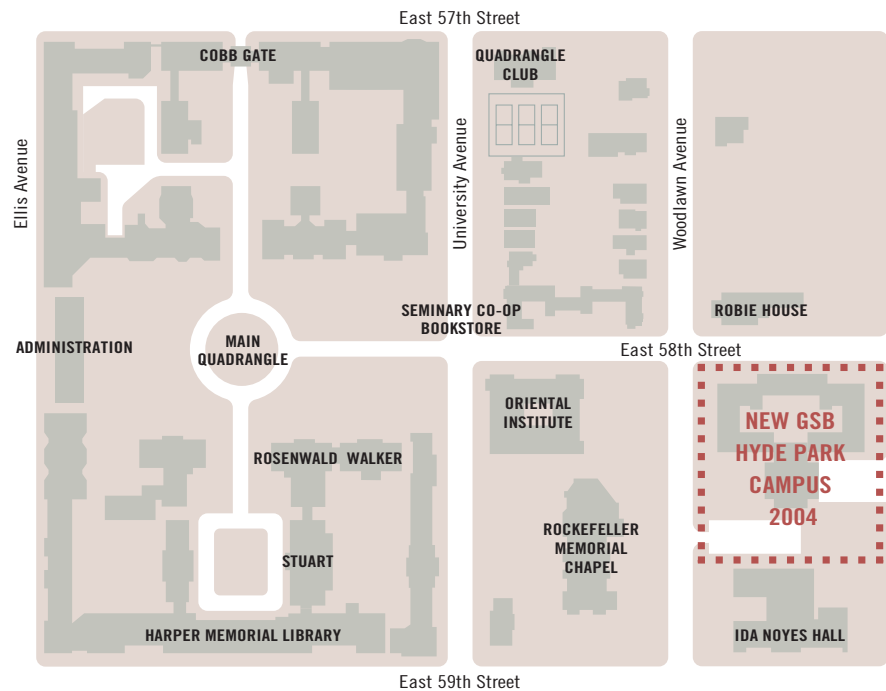
Jacky Ho

**Singapore 2000**



**Hyde Park 2004**

When the new building is completed in Hyde Park in 2004, the GSB will be able to lay claim to having the finest set of dedicated business school campuses in the world.



The new GSB facility in Hyde Park will replace classrooms and offices in Rosenwald, Walker, and Stuart as well as Edelstone, Fenn House, and Chicago Theological Seminary (not pictured).

staff. This spring, Turner Construction built a mock classroom, a mock faculty office, and a mock staff office to test the design and allow the GSB to make changes. Viñoly designed the common space to foster community, Huizinga said. “This is a building in which all our constituencies will find it easy to interact and enjoyable to spend time.”

**Building Campaign Momentum**

From the beginning, donors showed significant support for the project. Before the plans were even finalized, the GSB received several gifts. The first to make donations were distinguished service professor emeritus Sidney Davidson, who gave \$500,000, and Lincoln Yung, ’70, who contributed \$250,000. Some of the generous gifts that followed gave the campaign a significant boost in its early stages, including \$25 million from Keller; \$5 million from Alper; \$12 million from Robert Rothman, ’77; \$10 million

from David Booth, ’71. Two alumni made gifts anonymously.

Alper said at the groundbreaking, “The campaign has allowed us to re-connect with alumni whose support is so vital to our continuing success in the increasingly competitive world of graduate business education.”

Several more donors emerged as the campaign got into full swing, including Peter May, A.B. ’64, M.B.A. ’65, who made a \$5 million gift; Fidelity Investments, which gave \$150,000; and Thomas Charters, ’72, who made a \$200,000 gift.

said. “This building will be a monument to that connectedness.”

Jannotta agreed. “You’re doing a good thing for the business school, and a great thing for the university,” he said to the crowd assembled for the groundbreaking ceremony.

Viñoly won the architecture competition to design the new campus. He pointed out that the groundbreaking was both a celebration of work completed and the beginning of a new phase for the GSB. “This is more than a celebration, it’s a call to the troops,” he said. “We need to continue your

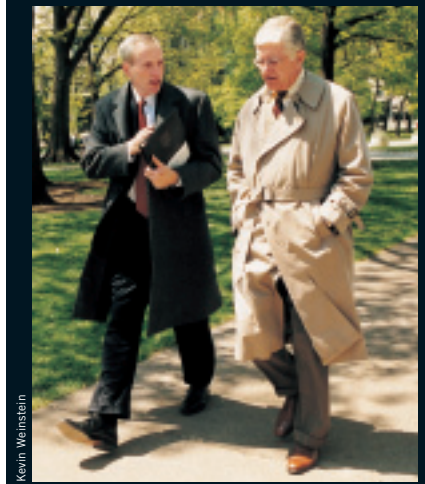
**“The Graduate School of Business is part of the intellectual fabric of the university. This building will be a monument to that connectedness.” —Don Michael Randel**

Funding the project fully is crucial, Snyder said. “We don’t want this new building to burden our people or programs. I remain focused on encouraging our supporters to reduce the size of the mortgage that we’ll take on in August 2004.”

Fundraising for the GSB’s new campus is part of the University of Chicago’s \$2 billion campaign, called the Chicago Initiative. At the groundbreaking, Randel applauded the GSB’s effort. “The Graduate School of Business is part of the intellectual fabric of the university,” he

involvement, especially you students.”

Snyder looked forward to the day the doors would open. “We’re going to have the best set of facilities of any business school in the world.” ■



Kevin Weinstein

Dean Edward A. Snyder (left) confers with university president Don Michael Randel on the way to the groundbreaking ceremony.

**In Good Company**

The new campus Rafael Viñoly designed for the GSB gained the attention of the Chicago Architecture Foundation, which chronicled the “building boom” at the University of Chicago in its spring newsletter.

“Viñoly’s design for the GSB centers on an atrium, the roof of which features tall, arched forms that echo the Gothic arches of [the campus],” it said. “University planners have said that any new construction must rise to the quality of the original campus despite urgent space needs, and also must allow for future growth.”

The GSB is in good company when it comes to construction projects on the Hyde Park campus. Other projects currently under way include the Gerald Ratner Athletics Center, scheduled to open in September 2003; the Inter-divisional Research Building, set to open in 2005; and the University of Chicago Comer Children’s Hospital, scheduled to open sometime in 2004.

Recently completed projects include the Max Palevsky Residential Commons, which opened during the last academic year.—P.B.